



We deliver simple, flexible and secure product lifecycle management to electronic, industrial and consumer goods manufac-

## Discover 10 reasons why PDXpert® PLM can

- Increase sales revenues
- Reduce product costs
- Lower administrative expense

*...Then prove the benefits yourself with a FREE trial!*

### Increase your revenues

It's obvious: short design times and fast change cycles drive earlier product launches. With **PDXpert PLM**, you'll see revenue sooner by reducing your product design cycle.

#### 1. Cut development time in half, and get to market faster

According to AMR Research, you can *double* your engineering efficiency just by adopting a PLM solution. That's like adding another engineer for the cost of a **PDXpert** license!

Launch your products faster:

- Quickly find parts, documents, changes and files using powerful *free-form text search*
- Review in-process designs before release without distracting your designers
- Secure design files in a central server, minimizing rework from damage or loss
- Reduce bill of materials errors and get real-time assembly cost roll-ups
- Easily find, rework and reapply previously-approved designs to new products

#### 2. Shorten release and change cycles

Manual product release and change processes waste time. Users must locate and copy affected documents, then write and submit the change order. One-person-at-a-time reviews can be delayed by slow or misdirected interoffice mail. "Expediting" a change means walking the change package from one reviewer to the next. Involving supply chain partners may require travel, express parcels, insecure or lost postal mail, irrelevant or incorrect file attachments, and a host of other problems.

**PDXpert** centralizes product data in a secure repository, allowing many reviewers simultaneous access to product data. Configurable change workflows identify approving departments, as well as their approval sequence and authorized reviewers. Item dispositioning activities can be



#### The PLM effect

"By reducing meeting, travel, document search, error correction, and other nonvalue-added time sinks, **engineering efficiency will double.**"

- AMR Research, Inc.

easily identified, and resulting costs calculated. Email notifications are sent automatically so there is no delay between one person's approval and the next person's review. Changes can be pulled back, reworked, and resubmitted without leaving your desk to chase down a design package.

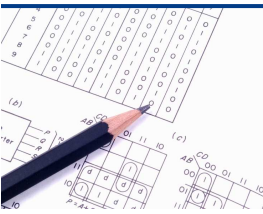
**Quick change** In one PLM study, a US medical device manufacturer cut its engineering change process from 33 days to only 5 days. A UK gas appliance manufacturer saw a **75% time-to-market improvement**.



## Reduce product unit costs

### 3. Enjoy more comprehensive, yet less intrusive, collaboration

About 70% of a product's lifetime production costs are established during development. Seeing new designs *before* they're released encourages feedback by other employees in engineering, sourcing, production, quality and service.



**No surprises** A central data repository allows controlled review before the design is released.

With **PDXpert**, all product plans, drawings and procedures for procurement, production, inspection, service, repair and disposal

are immediately available. Designers will no longer be distracted with on-going requests for preliminary or released data. And system security roles allow you to tailor data and file access based on item release status, as well as project team and department membership.

### 4. Simplify your inventory: purchase fewer parts in larger volumes

You can radically reduce inventory costs by modifying a previously designed part, or changing a new design to work with current parts. Part re-use smooths demand to suppliers, ensures higher component volumes, and reduces purchasing overhead costs and tooling expense.

However, part re-use can be difficult without automation. Relying on a designer's memory or searching through the ERP system is a hit-or-miss solution. As a result, re-use candidates are often overlooked, and duplicate parts are specified and sourced. **PDXpert** encourages attribute-based item exploration, which helps engineers identify workable parts that are already in inventory.

### 5. Increase production experience

Studies have shown that longer production lifecycles deliver predictable cost reductions. More time is available for making incremental improvements in procurement and production.

Earlier product introductions ensure longer, more profitable production runs. **PDXpert** software's ability to reduce change cycles, improve early design collaboration, and encourage part re-use all contribute to longer production runs.

### 6. Slash production rework and scrap

**PDXpert** is specifically designed to provide a full audit trail of all changes to the BOM, including what was changed, when and why it changed, who approved the changes, how affected items were dispositioned, and the total recurring and non-recurring cost.

	A	B	C	D	E	F	G
1	Find	Number	Rev	Description	Quantity	Units	Refer
2		1 987761	C	Circuit board, 2 side	1	EA	
3		762445	F	Diode, 1A thru-hole	4	EA	D1-D4
4		3 345291	A	Resistor, 470nm, 1W	2	EA	R1,R2
5		4 0166			2	EA	C1,C2
6		5 3241			3	EA	R3,R5,
7		6 4822			1	EA	D5
8		7 4299			6	EA	C4,C7,
9		8 5209					

*JG, the part number doesn't match this description!  
And is this revision correct?*

**Expensive Excel** Spreadsheets are often considered a cheap tool for managing bills of materials, but the slow copy-paste-edit process and frequent mistakes can make them surprisingly ex-

Change workflows ensure that product modifications are reviewed and approved prior to release. On-line review and approval is faster, and can be more comprehensive, than a paper-based change process. Bills of materials are consistent and can include documentation on production and inspection processes.

### 7. Minimize excess and obsolete (E&O) inventory

Reduce your exposure to excess and obsolete inventory through:

- Accurate bills of materials
- Faster review and approval of product changes and supplier qualification
- More visibility into pending and approved changes by the entire organization
- Fewer part types via re-use
- Real-time purchasing specifications
- Cost impact of proposed changes
- Supplier coordination during changes.

Together, these benefits can reduce your E&O inventory expenses by up to 80%.

## Reduce administrative overhead

### 8. Streamline compliance tasks

If your development or production process is subject to regulatory or contractual audit by a third party, **PDXpert software** can simplify review and acceptance. It's far easier for other organizations to accept commercial-grade documentation and system configuration reports, rather than an internally-developed patchwork process. **PDXpert** supports best practices developed by companies subject to ISO 9000, ISO 10007, FDA Part 820, EIA/IS-649, and MIL-HDBK-61 requirements.

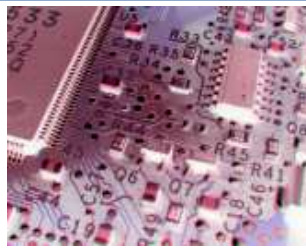
### 9. Assess and report on a product's environmental impact

Government regulations now restrict the types of materials contained in products and specify more stringent environmental-impact reporting.

Europe's *Waste Electrical and Electronic Equipment* ("WEEE") and *Restriction of Hazardous Substances in Electrical and Electronic Equipment* ("RoHS") directives address product environmental impact and require material tracking and, in some cases, data reporting. The U.S. EPA and OSHA likewise prohibit or restrict the use of certain hazardous materials, and your company may be required to track certain compositions.

The electronics and automotive industries, among others, are adopting environmentally-friendly practices at an increasing rate, and often require supply chain partners to provide detailed Materials Declaration reports to verify compliance.

**Know your materials** Your product's lifespan will be affected by existing and upcoming regulations. In Europe, Japan and North America, your customers may require you to report your product's materials.



Manual calculations, particularly for hazardous substances that are measured in parts per million (ppm) or parts per billion (ppb), can be time-consuming, imprecise and error-prone. **PDXpert** software radically simplifies the task by automatically calculating and reporting product material composition for a particular item and across a bill of materials.

### 10. Reduce process administrative and clerical costs

Managing and communicating product data is expensive: printing, copying, faxing, carrying changes from one office to the next, shipping quote packages — the list is endless.

A manual document control and change management process can require a small army of change analysts, administrators, document checkers, and copy clerks.

**PDXpert's** data management, workflow and email notification systems reduce the paper chase *and* enforce a well-controlled process. Once the processes are defined, users can perform more tasks in less time, freeing your current staff to do more important things than push paper.

## A simple, flexible, and secure software system is the key

### Simplicity from the ground up

You may have heard that product lifecycle management software is expensive to purchase and complicated to set up. Unfortunately, this is often true of many large PLM systems.

We share your impatience with confusing sales presentations, annoying contract negotiations, complicated installation, expensive configuration and hard-to-learn user interfaces. So **PDXpert** skips all of that.

**PDXpert** has been designed by engineering, software, and certified configuration management professionals with one goal: to create a simple yet flexible PLM solution.

### Simple to evaluate

Most PLM vendors know their software is pretty complicated, so you may be asked to sit through demonstrations using "example" data that might not reflect your actual needs.

Our approach goes beyond simplistic web demos. We think that it's better for you to fully explore **PDXpert** using your own data and processes, at your own pace — and without a sales engineer looking over your shoulder.

The **PDXpert** system that you evaluate is our actual product, not just a limited-function demo software. It contains the complete application features, forms and reports. Install it yourself in just a few minutes. Take as long as you need to set up your configuration. Experiment with various settings.

---

"**PDXpert** provides an enterprise class tool that offers powerful capabilities for content management and collaboration with the scalability needed to support our ongoing growth." *Mike Dunning, Configuration Manager, SYMVIONICS, Inc.*

---

Then simply create and manage your parts, documents, bills of materials and changes. Any number of users can be added to help evaluate the software, so you'll be able to design the processes you'll use and determine the number of licenses you'll actually need. If you need to start over, it's just a few clicks to re-initialize your new starting database.

You'll be productive even during the evaluation period. All of the settings and data from your evaluation will be immediately available when you purchase your license key.

### Simple to purchase

Some PLM salespeople are tough negotiators because the more you pay, the better their commission. Prices, warranty terms, future upgrades, extra services, press releases — whatever it is, they'll want to talk it to death. How can you ever know if you got a good deal?

We think that you have better things to do than negotiating a complex PLM purchase.

So, we make it easy to calculate your license price right on our website. We openly publish our volume discounts. You can choose to buy a perpetual license with annual maintenance, or subscribe month-to-month if that suits your budget better.

And, we can usually arrange a temporary license for you to use our software while your purchasing staff does their thing.

### Simple to install

We've reduced the installation process to save you time and effort. Our multi-user installation is a snap: install the database server if needed, load the database using a "starter" template of best practices, and install the client application on each user's PC. No complex web server or high-end database is required.

You'll find that system configuration is both simple and flexible. You won't need to learn a separate administrator application. All of the areas that you'll want to customize are logical and clearly documented.

Give us a call to help tailor our application to your process. We'll be happy to walk you through system configuration. We can also set up your system for you according to your product data management rules, and send you a database file that reflects your desired settings.

### Simple for users

The goal: make **PDXpert** so easy to use that it could be downloaded and installed without the extensive technical support that other PLM software requires. Before a line of code was written,

**PDXpert** went through extensive usability analysis and design.

The resulting software takes full advantage of modern user interface elements:

- Convenient dockable search, navigation and administrative options panes
- Google™-like free-form text search returns documents, parts and change forms, as well as library file contents, sorted by an internal scoring engine; syntax includes wildcards and Booleans
- Intelligent drag-and-drop item, bill of materials and change form construction
- Time-saving file attachment using drag-and-drop from Windows Explorer
- IntelliChange™ automatically senses the release status of an item, and adds pending, released or canceled revisions, as well as unreleased BOM and source items, to the affected items list of a change form
- Context-sensitive reports for documents, parts, and change forms.

### Simple to learn

**PDXpert's** comprehensive on-line help is sufficient for many users. The file includes:

- A detailed description of every control on each window
- Suggestions for tailoring each collection of options
- Notes on document control and data management best practices
- Examples of how your configuration decisions might affect operation
- Extensive table of contents and a detailed index
- Additional PLM-related references, such as books, industry and military standards, authorities and agencies, and websites



**Easy to learn** With a simple user interface, a consistent data model, and few built-in limitations, you may not need our expert training

### Simple to manage

Although some PLM systems can be challenging to manage, **PDXpert** simplifies both application and system administration tasks.

All administrator options and settings are contained in an easy point & click interface. Flexible identifier assignments, extensive item attributes, and virtually unlimited object types and change workflows all help you stay on top of your organization's specific needs.

An easy-to-use server console supports database maintenance activities like backup and restore, file library relocation, and setup of email notification. Application updates can be handled entirely at the server, which detects out-of-date clients and downloads the new release directly to each user's desktop. IT staff need not visit a client workstation to refresh the application software.

### Flexibility for growing companies

Tailor **PDXpert** to your process with over 40 types of customizable collections covering:

- People, roles and organizations
- Documents
- Parts and units of measure
- Materials content
- Design and production files
- Identifiers and revisions
- Change forms and workflow

Each collection can have an unlimited number of members, each with extensive customizable properties that give you full control.

For example, **PDXpert** doesn't specify a fixed number of change action types; you can create, name, and tailor an unlimited number of special ECO, ECR, ECP, ECN, MCO, deviation, waiver, CPA or other change types, each with their own workflow, default approval list, affected item types, identifier format, and unlimited custom attributes.

Speaking of which, custom attributes can be defined at the item class (part, document and change) and at the item type (e.g., resistor, IC, or screw). At your option, a custom attribute can include a unit of measure or currency.

### Security that beats any home-grown database or distant ASP service

All product companies regard the intellectual property (IP) captured in their design and production data as vital to their success. Anyone considering a PLM solution needs to ensure the security and immediate availability of this critical data.

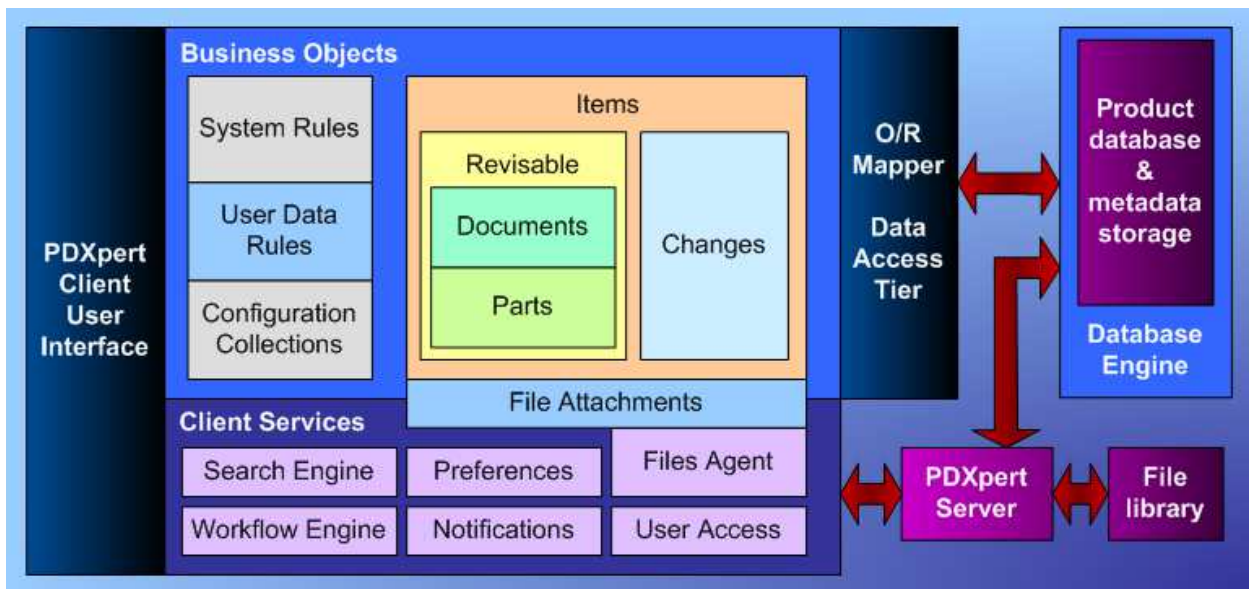
Most internally-developed product data management systems rely on "as available" development resources and are unable to add many crucial functions. But the biggest challenge (and therefore the most common omission) is a well-planned data access strategy.

**PDXpert** gives you flexible, simple-to-manage role- and membership-based permissions that take account of item status, project team membership, file access, guest searches, and a variety of subtle security issues.

While off-site PLM services (ASPs) can offer inexpensive solutions when compared to UNIX-based PLM systems, they also carry some uncomfortable risks with respect to data backup, disaster recovery, IP security, and inaccessibility due to connection outages.

With **PDXpert**, your company's irreplaceable product data is always on-site, under your direct control, with your own staff following your established procedures. Your team's productivity is never dependent on the performance and availability of an outside data connection. And, you'll be pleased that **PDXpert's** price of ownership is quite competitive to an ASP's on-going monthly charges.

**PDXpert's** modular, scalable architecture can support single-user systems as well as larger multi-user applications



## Powerful, scalable technology

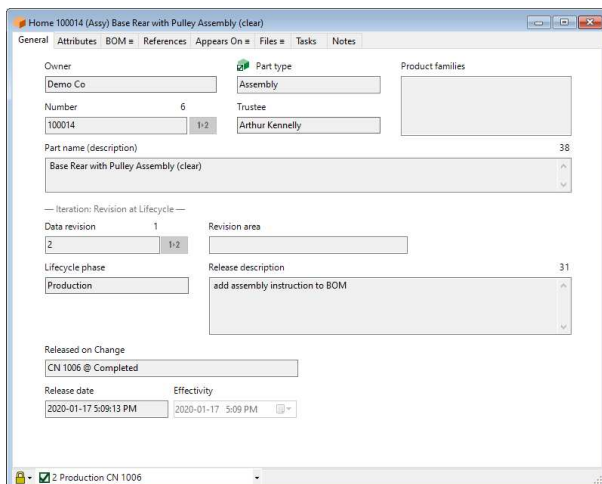
PDXpert is an n-tier Model-View-Controller design implemented in the C# language. This provides a powerful software foundation that ensures a high degree of usability and a solid path to future capabilities.

For smaller organizations, PDXpert auto-installs a free version of Microsoft SQL Server. Depending on your hardware, Windows version, and network performance, you may find that this database can easily handle your company's data. For larger systems, simply load the PDXpert database into your own SQL Server workgroup or enterprise instance.

## Features and functions

### Items (documents and parts)

- Create a virtually unlimited variety of document types, part categories and custom properties
- Define item numbers up to 70 alphanumeric characters, with prefix, sequentially-assigned, suffix and skip characters
- Define revisions up to 10 alphanumeric characters, with ability to skip undesired characters
- Manually or automatically assign revisions, using separate preproduction and production revision sequences
- Identify and assign tasks necessary to prepare the item for release

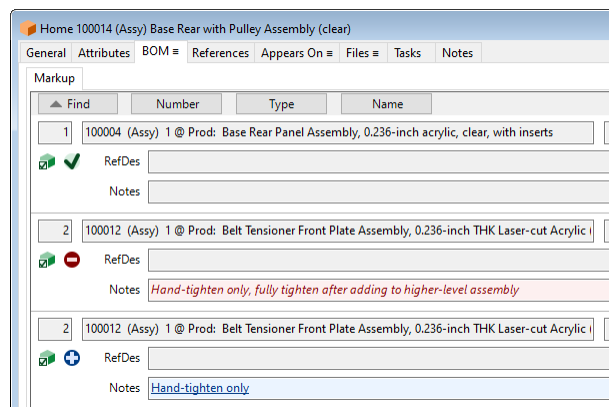


- Attach any number of files to an item; check-out/-in files for modifications without conflicts
- Define your own custom attributes

- Apply part materials and create Material Declaration reports

### Bills of Materials & References

- Build hierarchical parent-child relationships with unlimited levels, then search for “where used”
- “Drill down” into any BOM, and open child items to display associated design files from the data library
- Assign a virtually unlimited number of items to any level
- Define part attributes like quantity, units of measure and reference designators
- Roll up assembly costs, mass (weight) and material composition
- Export bills of materials to downstream manufacturing, service and CRM systems in their preferred import file formats using PDXpert’s built-in data transformer



- View the assembly’s original BOM on its **Markup** list, as well as automatically updated revisions on the **Current** list
- Identify mismatched and formatting errors between component quantity and reference designator count

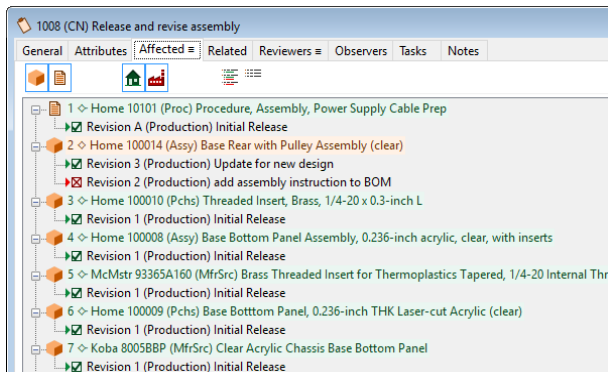
### File library

- Attach an unlimited number of files to any document, part, change or organization
- Associate a file with a specific revision of any document or part, or with that item generally
- Double-click any attached file to launch the associated Windows application for viewing the file.
- Search within attached files’ contents using the same fast & proven technology provided by Windows Search
- Include a note with each file attachment

- Control critical design files internally, or refer to uncontrolled “background” external information (e.g., vendor website)

### Change forms

- Reference a complete ISO 9000-compatible “delta list” that shows every new, changed, and obsolete item affected by the action
- Can be categorized by change problem type, change reason, interchangeability class, and priority
- Manage documents or parts, or both



- Identify, for temporary actions (such as deviations, waivers, stop ships), the beginning and ending serial numbers or manufacturing dates, and/or total quantities affected
- Automatically identify product models or families impacted by the changed items
- Reference related changes to provide a complete change impact
- Specify the release/cancel effective date for each affected item
- Identify dispositioning activity and cost impact for each affected item, and sums these for the total change expense
- Can be reviewed by any number of approval groups, in any combination of sequential and parallel notification paths
- Include non-reviewing individual observers or groups in change workflow email notices

### Workflow Rules

- Support your ISO 9000 efforts by defining how your company controls the engineering change process
- Design your workflows with a few simple mouse clicks: enable paths, set notification parties, skip unneeded workflow states
- Inform users of changes requiring review using automatic e-mail notification

- Create separate reviewer and observer lists, and notify users based on change’s lifecycle phase

### Administration

- Easily manage system design using the simple and consistent control user interface
- Create text templates that suggest consistent data entry by populating item fields with standard instructions and description formats
- Categorize units of measure to enable conversion between length, weight, currency, time and other measures
- Create custom database views to feed design attributes to ODBC-compatible CAD software such as Altium®, OrCAD® and PADS®

### System requirements

#### Client computer (minimum):

- Processor: 2 GHz Intel/AMD 64b
- Memory: 4 GB
- Hard disk: up to 650 MB for local cache
- OS: Windows 7, 8 & 8.1, 10, 11 (32b/64b)
- Display: 1280 by 1024 minimum

#### Server computer (minimum):

- Processor: 2 GHz Intel/AMD 64b
- Memory: 4 GB (8+ GB recommended)
- Hard disk: 6 GB, plus space for file library
- OS: Windows 10/11, Server 2016 or higher
- Display: 1280 by 1024
- Backup device and software
- Database: Microsoft SQL Server (2014 or higher)

### User licenses & pricing

PDXpert offers simple, cost-effective named



**Paper costs money** For only 10 cents per user-hour, PDXpert increases every user’s productivity while improving your bottom line.

user licenses. We do not impose a separate server license fee, nor do we charge extra for administrator, analyst, reviewer, or other roles.

The perpetual license gives you full rights to use PDXpert on a single server for the licensed number of users. It can be purchased with or without a separate annual maintenance, support and upgrade service.

Perpetual License / Optional Maintenance, Support & Upgrades Subscription

Perpetual full-function (FF)	1 user	3	10	30	100	300
License: one time	996.00	896.00	796.00	696.00	596.00	496.00
Maintenance, support & upgrades per year	249.00	224.00	199.00	174.00	149.00	124.00
Perpetual read-only (RO)	1 user	3	10	30	100	300
License: one time	196.00	176.00	156.00	136.00	116.00	96.00
Maintenance, support & upgrades per year	49.00	44.00	39.00	34.00	29.00	24.00

Subscription License per Month / Maintenance, Support & Upgrades Included

	1 user	3	10	30	100	300
Full-feature account for 6 months	65.00	59.00	52.00	45.00	39.00	32.00
Full-feature account for 12 months	49.00	44.00	39.00	34.00	29.00	24.00
Read-only account for selected period	12.00	11.00	10.00	9.00	8.00	7.00

All prices shown are USD per named user account, exclusive of applicable taxes, shipping, training and other services

Our subscription licensing provides greater flexibility by allowing you to select subscription periods of 6 or 12 months, with attractive tiered discounts. Our subscription licenses always include the complete annual maintenance, support and upgrade service.

**Maintenance, support, upgrades**

At your option, an annual maintenance, support and upgrade (MSU) service is available for perpetual licenses. Subscription licenses always include MSU.

**We know PLM, and truly enjoy seeing your success**

Since 1994, we’ve been selling affordable product management solutions to organizations of all sizes around the world.

We’re unique in the PLM industry because we strive for a simple, hassle-free experience:

- No artificial “web demo” but a fully-functional evaluation system that you can download and try out using your company’s own product data, rules and workflow
- Published prices with attractive discounts
- Convenient, flexible licenses: perpetual or subscription
- Friendly, honest advice on how **PDXpert** will work for you, without a sales pitch

- Straight-forward user interface for easy administration and user productivity

We want you to know exactly what we’re selling, so we make it easy to compare **PDXpert** to our competition. As experts in the field, we can even suggest another PLM product if we can’t meet your objectives.

**Download an evaluation now**

Download your free, fully-functional PLM system right now, and try it using your company’s own data. We think you’ll be impressed!

On the web: [www.BuyPLM.com](http://www.BuyPLM.com)

[PDXpertSales@ActiveSensing.com](mailto:PDXpertSales@ActiveSensing.com)

For sales & support

**Active Sensing, Inc.**

Denver, CO 80104-1236 USA

In the U.S. +1 (855) PDXPERT

International +1 (720) 862-3001

**PDXpert®** is a registered trademark of Active Sensing, Inc. All other trademarks are the property of their respective owners. Software described herein is licensed, not sold. Refer to the PDXpert software license agreement for terms and conditions. Product features, specifications and prices are subject to change without notice. Refer to our standard sales policies at [www.BuyPLM.com/policies](http://www.BuyPLM.com/policies). 2022-09-01

“I am amazed by the **clarity and simplicity of PDXpert**. I have worked extensively on ENOVIA and SmarTeam, but I appreciate the architecture of **PDXpert**.”

Vikash Singh, PLM Team Lead, PSP Ltd.